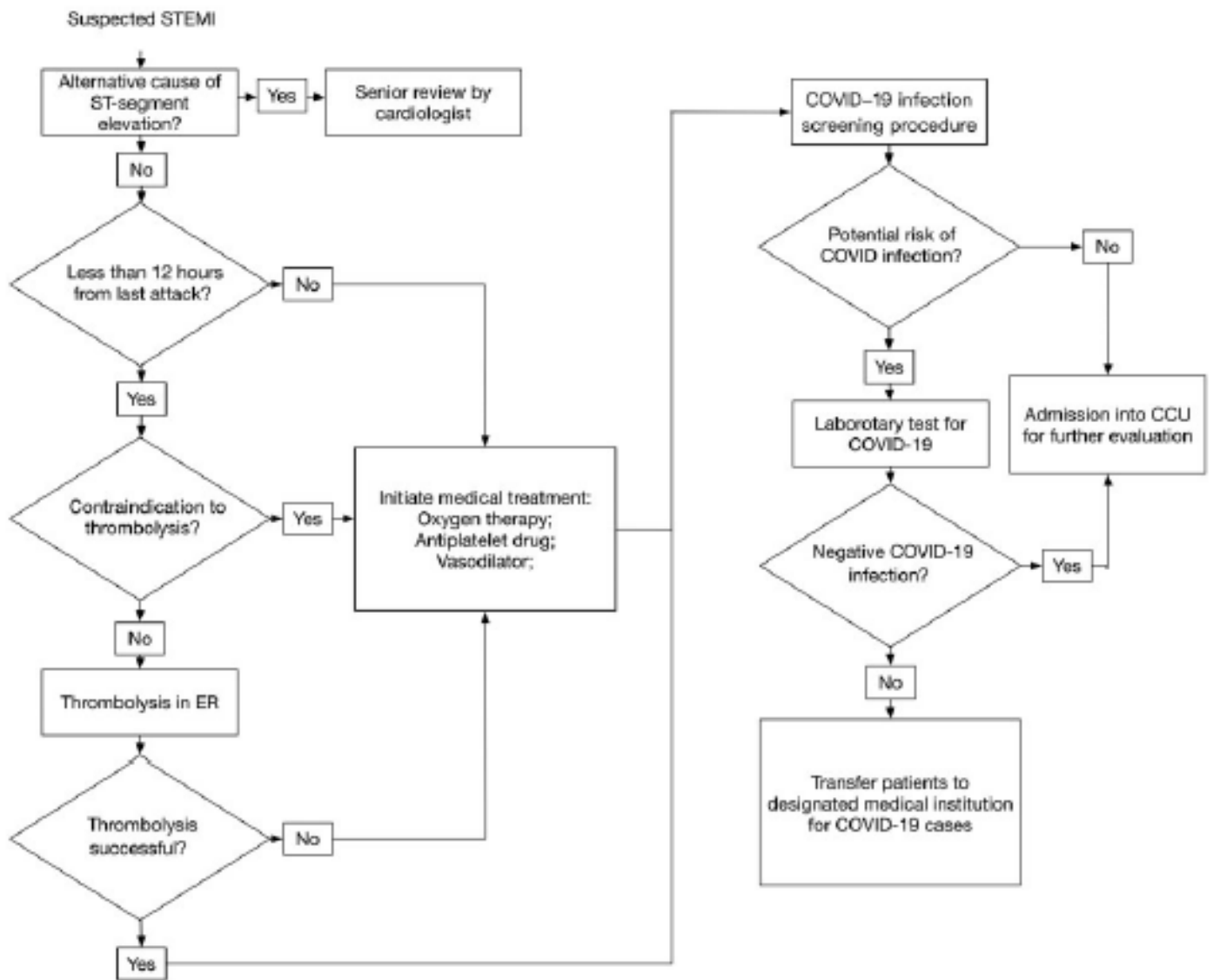


Recommendations from the Peking Union Medical College Hospital for the management of acute myocardial infarction during the COVID-19 outbreak

European Heart Journal (2020) 0, 1–5
doi:10.1093/eurheartj/ehaa258

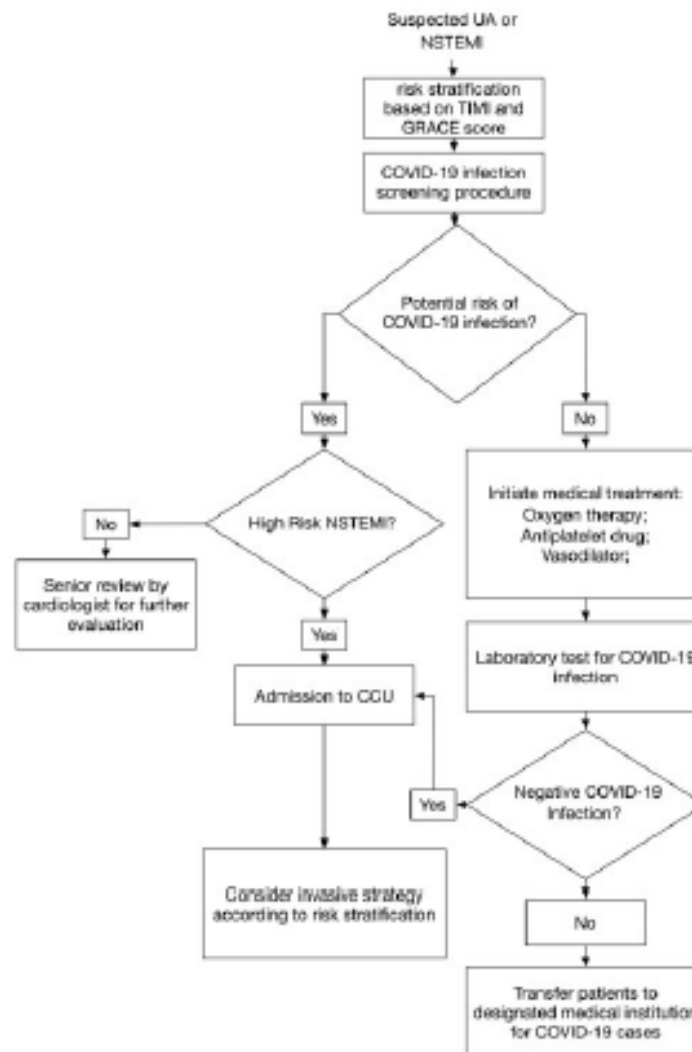
STEMI



STEMI: ST-segment Elevated Myocardial Infarction. ER: Emergency Room. CCU: Coronary Care Unit. COVID-19: Coronavirus Disease 2019, a respiratory tract infection caused by coronavirus SARS-CoV2.

Figure 1 Management of suspected STEMI patients with potential risk of COVID-19 infection.

NSTEMI



COVID-19: Coronavirus Disease 2019, a respiratory tract infection caused by coronavirus SARS-CoV2.
CCU: Coronary Care Unit. NSTEMI: Non-ST segment Elevated Myocardial Infarction. UA: Unstable Angina.

Figure 2 Management of suspected unstable angina (UA)/NSTEMI patients with potential risk of COVID-19 infection.